

Breakers and Switches

# Tmax XT

## Moulded-case circuit-breakers

### Simply eXTraordinary

فروشگاه اینترنتی اتوماسیون ۲۴

**Automation24.it**


(۰۲۵) ۳۶۶۱۳۶۷۸ - ۳۶۶۱۳۷۷۸

Power and productivity  
for a better world™



# Tmax XT

## Electrical characteristics

|   |   | <b>XT1</b>              |                               |                  |      |      |            |
|---|---|-------------------------|-------------------------------|------------------|------|------|------------|
| Size  |   | [A]                     | 160                           |                  |      |      |            |
| Poles   |   | [N.]                    | 3, 4                          |                  |      |      |            |
| Rated service voltage, Ue                           | (AC) 50-60Hz  | [V]                     | 690                           |                  |      |      |            |
|   | (DC)  | [V]                     | 500                           |                  |      |      |            |
| Rated insulation voltage, Ui                        |   | [V]                     | 800                           |                  |      |      |            |
| Rated impulse withstand voltage, Uimp               |   | [kV]                    | 8                             |                  |      |      |            |
| Versions  |   |                         | Fixed, Plug-in <sup>(1)</sup> |                  |      |      |            |
| Breaking capacities according to IEC 60947-2        |   |                         | B                             | C                | N    | S    | H          |
| Rated ultimate short-circuit breaking capacity, Icu |   |                         |                               |                  |      |      |            |
| Icu @ 415V 50-60Hz (AC)                             |   | [kA]                    | 18                            | 25               | 36   | 50   | 70         |
| Icu @ 690V 50-60Hz (AC)                             |   | [kA]                    | 3                             | 4                | 6    | 8    | 10         |
| Icu @ 500V (DC) 2 poles in series                   |   | [kA]                    | -                             | -                | -    | -    | -          |
| Icu @ 500V (DC) 3 poles in series <sup>(2)</sup>    |   | [kA]                    | 18                            | 25               | 36   | 50   | 70         |
| Rated service short-circuit breaking capacity, Ics  |   |                         |                               |                  |      |      |            |
| Ics @ 415V 50-60Hz (AC)                             |   | [kA]                    | 100%                          | 100%             | 100% | 75%  | 50% (37,5) |
| Ics @ 690V 50-60Hz (AC)                             |   | [kA]                    | 100%                          | 100%             | 75%  | 50%  | 50%        |
| Ics @ 500V (DC) 2 poles in series                   |   | [kA]                    | -                             | -                | -    | -    | -          |
| Ics @ 500V (DC) 3 poles in series <sup>(2)</sup>    |   | [kA]                    | 100%                          | 100%             | 100% | 100% | 75%        |
| Utilisation Category (IEC 60947-2)                  |   |                         | A                             |                  |      |      |            |
| Reference Standard                                  |   |                         | IEC 60947-2                   |                  |      |      |            |
| Isolation behaviour                                 |   |                         |                               |                  |      |      |            |
| Mounted on DIN Rail                                 |   |                         | DIN EN 50022                  |                  |      |      |            |
| Mechanical life                                     |   | [No. Operations]        | 25000                         |                  |      |      |            |
|   |   | [No. Hourly operations] | 240                           |                  |      |      |            |
| Electrical life @ 415V (AC)                         |   | [No. Operations]        | 8000                          |                  |      |      |            |
|   |   | [No. Hourly operations] | 120                           |                  |      |      |            |
| Dimensions - Fixed<br>(Width x Depth x Height)      |  | 3 poles                 | [mm]                          | 76,2 x 70 x 130  |      |      |            |
|   |   | 4 poles                 | [mm]                          | 101,6 x 70 x 130 |      |      |            |
| Total opening time                                  |   |                         |                               |                  |      |      |            |
|   | Circuit-breaker with shunt opening release  | [ms]                    | 15                            |                  |      |      |            |
|   | Circuit-breaker with undervoltage release   | [ms]                    | 15                            |                  |      |      |            |
| Trip units for power distribution                   |   |                         |                               |                  |      |      |            |
|   | TMD/TMA   |                         |                               |                  |      |      |            |
|   | TMD   |                         |                               |                  |      |      |            |
|   | Ekip LS/I   |                         |                               |                  |      |      |            |
|   | Ekip LSIG   |                         |                               |                  |      |      |            |
|   | Ekip E  |                         |                               |                  |      |      |            |
| Trip units for motor protection                     |   |                         |                               |                  |      |      |            |
|   | MF/MA   |                         |                               |                  |      |      |            |
| Interchangeable trip units                          |   |                         |                               |                  |      |      |            |
| Weight  | Fixed   | 3/4 poles               | [kg]                          | 1,1 / 1,4        |      |      |            |

<sup>(1)</sup> XT1 plug-in: In max=125A

<sup>(2)</sup> XT1 500V DC 4 poles in series

| XT2                          |      |      | XT3            |          | XT4                          |      |      |
|------------------------------|------|------|----------------|----------|------------------------------|------|------|
| 160                          |      |      | 250            |          | 160 / 250                    |      |      |
| 3, 4                         |      |      | 3, 4           |          | 3, 4                         |      |      |
| 690                          |      |      | 690            |          | 690                          |      |      |
| 500                          |      |      | 500            |          | 500                          |      |      |
| 1000                         |      |      | 800            |          | 1000                         |      |      |
| 8                            |      |      | 8              |          | 8                            |      |      |
| Fixed, Plug-in, Withdrawable |      |      | Fixed, Plug-in |          | Fixed, Plug-in, Withdrawable |      |      |
| N                            | S    | H    | N              | S        | N                            | S    | H    |
| 36                           | 50   | 70   | 36             | 50       | 36                           | 50   | 70   |
| 10                           | 12   | 15   | 5              | 6        | 10                           | 12   | 15   |
| -                            | -    | -    | -              | -        | 36                           | 50   | 70   |
| 36                           | 50   | 70   | 36             | 50       | 36                           | 50   | 70   |
| 100%                         | 100% | 100% | 75%            | 50% (27) | 100%                         | 100% | 100% |
| 100%                         | 100% | 100% | 75%            | 50%      | 100%                         | 100% | 100% |
| -                            | -    | -    | -              | -        | 100%                         | 100% | 100% |
| 100%                         | 100% | 100% | 100%           | 75%      | 100%                         | 100% | 100% |
| A                            |      |      | A              |          | A                            |      |      |
| IEC 60947-2                  |      |      | IEC 60947-2    |          | IEC 60947-2                  |      |      |
| DIN EN 50022                 |      |      | DIN EN 50022   |          | DIN EN 50022                 |      |      |
| 25000                        |      |      | 25000          |          | 25000                        |      |      |
| 240                          |      |      | 240            |          | 240                          |      |      |
| 8000                         |      |      | 8000           |          | 8000                         |      |      |
| 120                          |      |      | 120            |          | 120                          |      |      |
| 90 x 82,5 x 130              |      |      | 105 x 70 x 150 |          | 105 x 82,5 x 160             |      |      |
| 120 x 82,5 x 130             |      |      | 140 x 70 x 150 |          | 140 x 82,5 x 160             |      |      |
| 15                           |      |      | 15             |          | 15                           |      |      |
| 15                           |      |      | 15             |          | 15                           |      |      |
| 1,2 / 1,6                    |      |      | 1,7 / 2,1      |          | 2,5 / 3,5                    |      |      |

# Tmax XT

## Simply eXTraordinary



2010 Red dot Design Award winner, Tmax XT set up a new technological standard.

eXTraordinary demonstration of ABB innovation capability.  
eXTraordinary latest generation electronics.  
eXTraordinary coverage of all plant requirements.  
eXTraordinary performances in compact dimensions.  
eXTraordinary simplicity of installation and putting into service.  
eXTraordinary range of accessories available.



reddot design award

## Main characteristics

### Tmax XT1

Frames and In: XT1 up to 160A

Poles: 3, 4

Ue: AC 50-60Hz 690V, DC 500V

Versions: F, P

Icu: XT1 @415V AC: B, C, N, S, H up to 70kA

Trip units: TMD

Dimensions: (W 3p/4p x D x H) 76,2/101,6x 70 x 130mm

XT1D switch-disconnector version

### Tmax XT3

Frames and In: XT3 up to 250A

Poles: 3, 4

Ue: AC 50-60Hz 690V, DC 500V

Versions: F, P

Icu: @415V AC: N, S up to 50kA

Trip units: TMD, MA

Dimensions: (W 3p/4p x D x H) 105/140 x 70 x 150 mm

XT3D switch-disconnector version

### Tmax XT2

Frames and In: XT2 up to 160A

Poles: 3, 4

Ue: AC 50-60Hz 690V, DC 500V

Versions: F, P, W

Icu: XT2 @415V AC: N, S, H up to 70kA

@690V AC: N, S, H up to 15kA

Trip units: TMD/TM MF/MA, Ekip LS/I, Ekip LSIG

Interchangeable trip units

Dimensions: (W 3p/4p x D x H) 90/120 x 82,5 x 130 mm

### Tmax XT4

Frames and In: XT4 up to 160A / 250A

Poles: 3, 4

Ue: AC 50-60Hz 690V, DC 500V

Versions: F, P, W

Icu: XT4 @415V AC: N, S, H up to 70kA

@690V AC: N, S, H, up to 15kA

Trip units: TMD/TMA, MF/MA, Ekip LS/I, Ekip LSIG, Ekip

E-LSIG

Interchangeable trip units

Dimensions: (W 3p/4p x D x H) 105/140 x 82,5 x 160 mm

**XT1 160 Thermal magnetic - Fixed (F) - 3 poles - Front terminals**

| 36 kA        |                                   | 50 kA        |                              | 70 kA        |                              |
|--------------|-----------------------------------|--------------|------------------------------|--------------|------------------------------|
| 1SDA066799R1 | XT1B 160 TMD 16-450 3p F F - 16kA |              |                              |              |                              |
| 1SDA066800R1 | XT1B 160 TMD 20-450 3p F F - 16kA |              |                              |              |                              |
| 1SDA067391R1 | XT1C 160 TMD 25-450 3p F F - 25kA |              |                              |              |                              |
| 1SDA067411R1 | XT1N 160 TMD 32-450 3p F F        |              |                              |              |                              |
| 1SDA067412R1 | XT1N 160 TMD 40-450 3p F F        |              |                              |              |                              |
| 1SDA067413R1 | XT1N 160 TMD 50-500 3p F F        | 1SDA067431R1 | XT1S 160 TMD 50-500 3p F F   | 1SDA067449R1 | XT1H 160 TMD 50-500 3p F F   |
| 1SDA067414R1 | XT1N 160 TMD 63-630 3p F F        | 1SDA067432R1 | XT1S 160 TMD 63-630 3p F F   | 1SDA067450R1 | XT1H 160 TMD 63-630 3p F F   |
| 1SDA067415R1 | XT1N 160 TMD 80-800 3p F F        | 1SDA067433R1 | XT1S 160 TMD 80-800 3p F F   | 1SDA067451R1 | XT1H 160 TMD 80-800 3p F F   |
| 1SDA067416R1 | XT1N 160 TMD 100-1000 3p F F      | 1SDA067434R1 | XT1S 160 TMD 100-1000 3p F F | 1SDA067452R1 | XT1H 160 TMD 100-1000 3p F F |
| 1SDA067417R1 | XT1N 160 TMD 125-1250 3p F F      | 1SDA067435R1 | XT1S 160 TMD 125-1250 3p F F | 1SDA067453R1 | XT1H 160 TMD 125-1250 3p F F |
| 1SDA067418R1 | XT1N 160 TMD 160-1600 3p F F      | 1SDA067436R1 | XT1S 160 TMD 160-1600 3p F F | 1SDA067454R1 | XT1H 160 TMD 160-1600 3p F F |

**XT2 160 Electronic and Magnetic only - Fixed (F) - 3 poles - Front terminals**

| 36 kA        |                                   | 50 kA        |                                      | 70 kA        |                                   |
|--------------|-----------------------------------|--------------|--------------------------------------|--------------|-----------------------------------|
| 1SDA067056R1 | XT2N 160 Ekip LS/I In=63A 3p F F  | 1SDA067765R1 | XT2S 160 MA 20 Im=120...280 3p F F   | 1SDA067859R1 | XT2H 160 Ekip LS/I In=63A 3p F F  |
| 1SDA067057R1 | XT2N 160 Ekip LS/I In=100A 3p F F | 1SDA067766R1 | XT2S 160 MA 32 Im=192...448 3p F F   | 1SDA067860R1 | XT2H 160 Ekip LS/I In=100A 3p F F |
| 1SDA067058R1 | XT2N 160 Ekip LS/I In=160A 3p F F | 1SDA067767R1 | XT2S 160 MA 52 Im=314...728 3p F F   | 1SDA067861R1 | XT2H 160 Ekip LS/I In=160A 3p F F |
|              |                                   | 1SDA067768R1 | XT2S 160 MA 80 Im=480...1120 3p F F  |              |                                   |
| 1SDA067074R1 | XT2N 160 Ekip LSIG In=63A 3p F F  | 1SDA067769R1 | XT2S 160 MA 100 Im=600...1400 3p F F | 1SDA067874R1 | XT2H 160 Ekip LSIG In=63A 3p F F  |
| 1SDA067075R1 | XT2N 160 Ekip LSIG In=100A 3p F F |              |                                      | 1SDA067875R1 | XT2H 160 Ekip LSIG In=100A 3p F F |
| 1SDA067076R1 | XT2N 160 Ekip LSIG In=160A 3p F F |              |                                      | 1SDA067876R1 | XT2H 160 Ekip LSIG In=160A 3p F F |

**XT3 250 Thermal magnetic - Fixed (F) - 3 poles - Front terminals**

| 36 kA        |                              | 50 kA        |                              |  |  |
|--------------|------------------------------|--------------|------------------------------|--|--|
| 1SDA068053R1 | XT3N 250 TMD 63-630 3p F F   | 1SDA068215R1 | XT3S 250 TMD 63-630 3p F F   |  |  |
| 1SDA068054R1 | XT3N 250 TMD 80-800 3p F F   | 1SDA068216R1 | XT3S 250 TMD 80-800 3p F F   |  |  |
| 1SDA068055R1 | XT3N 250 TMD 100-1000 3p F F | 1SDA068217R1 | XT3S 250 TMD 100-1000 3p F F |  |  |
| 1SDA068056R1 | XT3N 250 TMD 125-1250 3p F F | 1SDA068218R1 | XT3S 250 TMD 125-1250 3p F F |  |  |
| 1SDA068057R1 | XT3N 250 TMD 160-1600 3p F F | 1SDA068219R1 | XT3S 250 TMD 160-1600 3p F F |  |  |
| 1SDA068058R1 | XT3N 250 TMD 200-2000 3p F F | 1SDA068220R1 | XT3S 250 TMD 200-2000 3p F F |  |  |
| 1SDA068059R1 | XT3N 250 TMD 250-2500 3p F F | 1SDA068221R1 | XT3S 250 TMD 250-2500 3p F F |  |  |

**XT4 160/250 Thermal magnetic and electronic - Fixed (F) - 3 poles - Front terminals**

| 36 kA        |                                     |  |  | 70 kA        |                                     |
|--------------|-------------------------------------|--|--|--------------|-------------------------------------|
| 1SDA068090R1 | XT4N 250 TMA 200-2500 3p F F        |  |  | 1SDA068343R1 | XT4H 250 TMA 200-2000 3p F F        |
| 1SDA068092R1 | XT4N 250 TMA 250-2500 3p F F        |  |  | 1SDA068345R1 | XT4H 250 TMA 250-2500 3p F F        |
|              |                                     |  |  |              |                                     |
| 1SDA068125R1 | XT4N 160 Ekip LS/I In=160A 3p F F   |  |  | 1SDA068514R1 | XT4H 160 Ekip LS/I In=160A 3p F F   |
| 1SDA068126R1 | XT4N 250 Ekip LS/I In=250A 3p F F   |  |  | 1SDA068515R1 | XT4H 250 Ekip LS/I In=250A 3p F F   |
|              |                                     |  |  |              |                                     |
| 1SDA068140R1 | XT4N 160 Ekip LSIG In=160A 3p F F   |  |  | 1SDA068529R1 | XT4H 160 Ekip LSIG In=160A 3p F F   |
| 1SDA068141R1 | XT4N 250 Ekip LSIG In=250A 3p F F   |  |  | 1SDA068530R1 | XT4H 250 Ekip LSIG In=250A 3p F F   |
|              |                                     |  |  |              |                                     |
| 1SDA069601R1 | XT4N 160 Ekip E-LSIG In=40A 3p F F  |  |  | 1SDA069621R1 | XT4H 160 Ekip E-LSIG In=40A 3p F F  |
| 1SDA069602R1 | XT4N 160 Ekip E-LSIG In=63A 3p F F  |  |  | 1SDA069622R1 | XT4H 160 Ekip E-LSIG In=63A 3p F F  |
| 1SDA069603R1 | XT4N 160 Ekip E-LSIG In=100A 3p F F |  |  | 1SDA069623R1 | XT4H 160 Ekip E-LSIG In=100A 3p F F |
| 1SDA069604R1 | XT4N 160 Ekip E-LSIG In=160A 3p F F |  |  | 1SDA069624R1 | XT4H 160 Ekip E-LSIG In=160A 3p F F |
| 1SDA069605R1 | XT4N 250 Ekip E-LSIG In=250A 3p F F |  |  | 1SDA069625R1 | XT4H 250 Ekip E-LSIG In=250A 3p F F |

**XT1 - XT3 Switch disconnecter - Fixed (F) - 3 poles - Front terminals**

|              |                 |
|--------------|-----------------|
| 1SDA068208R1 | XT1D 160 3p F F |
| 1SDA068210R1 | XT3D 250 3p F F |

# Electronic trip unit



## Ekip LED Meter



Ekip LED Meter can be easily installed on the front of Ekip LSIG and Ekip E-LSIG electronic trip units by means of the test connector on the front of the release. Ekip LED Meter provides an accurate indication of the value of the current flowing through the trip unit by means of an LED scale, which is able to discriminate between operation, pre-alarm and alarm.

## Ekip Display



Ekip Display can easily be installed on the front of the Ekip LSIG and Ekip E-LSIG electronic trip units by the means of the test connector on the front of the trip unit. Ekip Display has four buttons for browsing through the menus.

Ekip Display

- Shows the current values.
- Shows the settings of the protection functions.
- Shows the protection that caused the release to trip and the fault current.
- Allows the trip thresholds of the trip unit to be programmed and the communication parameters to be set on bus system.

## Test and programming units



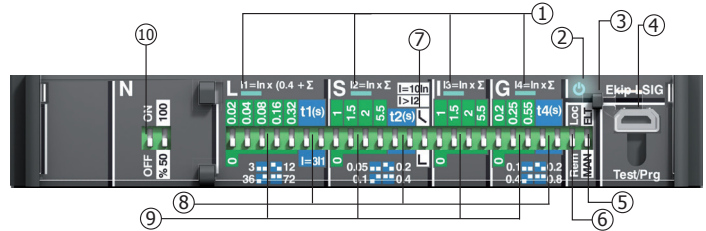
Ekip T&P test and programming purpose offers supervision, configuration and testing of advanced electronic trip units..



Ekip TT can be used to verify the correct functioning of the electronic trip unit's actuation mechanism and to give supply to the trip unit after the breaker trip.

## Names

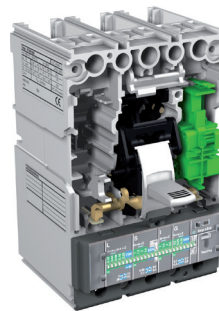
| Names | Application       | Protection functions |
|-------|-------------------|----------------------|
| Ekip  | ... Distribution  | LS/I, LSIG           |
|       | E Energy metering | LSIG                 |



## Characteristics

1. LEDs Protection L, S, I, G
2. Power on LED
3. Lead seal arrangement
4. USB test connector
5. Manual / electronic configuration selector
6. Local / remote configuration selector
7. Selection of S time-current curve
8. Selection of protection functions thresholds
9. Configuration of LSIG protection functions
10. ON/ OFF selector for Neutral

## Ekip Com

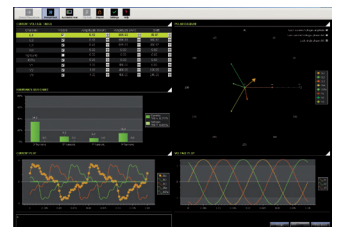


Circuit-breaker 3 poles

Ekip Com is able to connect Ekip LSIG and Ekip E-LSIG electronic trip unit to a Modbus communication line so that ON/OFF/TRIP state of the circuit-breaker can be detected and MOE-E motor operator can be controlled. Ekip Com module is installed in a dedicated slot in the right-hand pole of the circuit-breaker without any need for screws or tools. Ekip Com module allows the trip unit to be connected to a Modbus network, offering the possibility of programming the protections and acquiring the measurements and alarms when it is connected to a control and/or supervision system. When it is connected to the HMI030 unit, it is possible to have data locally on the front of the switchboard.

## Ekip T&P software

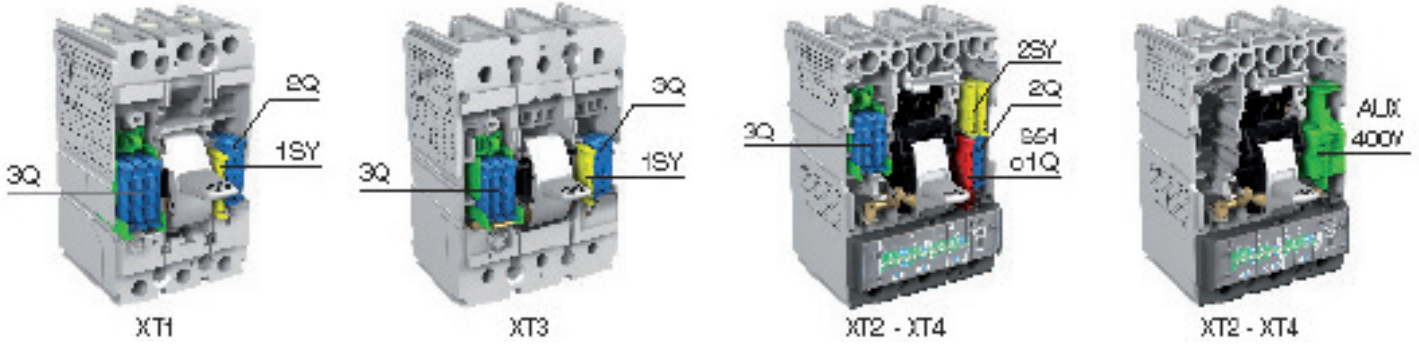
Ekip Connect is a software for installation and diagnosis for ABB products with Modbus RTU communication. In combination with Ekip T&P unit it is possible to perform any test on the trip unit protection functions.



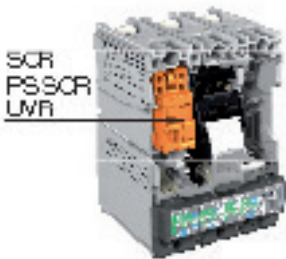
# Electrical accessories

## Auxiliary Contacts

Circuit-breaker 3 pole



## Service releases



To be mounted without the need of any screw

Q: Open/closed auxiliary contact

SY: Trip position auxiliary contacts

S51: Trip position due to trip unit intervention

## Service releases

3 pole circuit-breaker

Shunt opening release (SOR) opens the circuit-breaker by means of a non-permanent electrical control.

Undervoltage release (UVR). Opens the circuit-breaker when the release is subjected to either a power failure or voltage drop.

## Motor operators

Device that operates the circuit-breaker in the remote mode, by means of electric controls with thanks to the new design, power consumption is now reduced.



Stored energy motor operator  
MOE, for XT2 and XT4



Direct action motor operator,  
MOD, for XT1 and XT3

## Accessories for electronic Trip Units

|              |  |
|--------------|--|
| 1SDA068659R1 | EKIP DISPLAY x LSI-LSIG-M/LRIU XT2-XT4   |
| 1SDA068660R1 | EKIP LED METER x LSI-LSIG-M/LRIU XT2-XT4 |
| 1SDA068661R1 | EKIP COM x LSI-LSIG-M/LRIU XT2-XT4 F/P   |
| 1SDA066988R1 | Ekip TT XT2-XT4                          |
| 1SDA066989R1 | Ekip T&P XT2-XT4                         |
| 1SDA069142R1 | EXT NEUTRAL CT 63A XT2                   |
| 1SDA069143R1 | EXT NEUTRAL CT100A XT2                   |
| 1SDA069144R1 | EXT NEUTRAL CT160A XT2                   |
| 1SDA066978R1 | EXT NEUTRAL CT160A XT4                   |
| 1SDA066979R1 | EXT NEUTRAL CT250A XT4                   |

## Electrical accessories

### SOR Shunt trip releases

|              |  |
|--------------|--|
| 1SDA066314R1 | SOR XT1..XT4 24-30 Vac/dc                |
| 1SDA066317R1 | SOR XT1..XT4 220...240 Vac-220...250 Vdc |

### UVR Undervoltage releases

|              |                                    |
|--------------|------------------------------------|
| 1SDA066389R1 | UVR XT1..XT4 24-30 Vac/dc          |
| 1SDA066392R1 | UVR XT1..XT4 220-240Vac-220-250Vdc |

### AUX Auxiliary contacts

|              |                      |
|--------------|----------------------|
| 1SDA066422R1 | AUX 250 V XT1..XT4   |
| 1SDA066424R1 | AUX-SA 250 V XT2-XT4 |

### Motor operators

|              |                               |
|--------------|-------------------------------|
| 1SDA066457R1 | MOD XT1-XT3 24V dc            |
| 1SDA066460R1 | MOD XT1-XT3 220...250 V ac/dc |
| 1SDA066463R1 | MOE XT2-XT4 24 V dc           |
| 1SDA066466R1 | MOE XT2-XT4 220...250 V ac/dc |

## Mechanical accessories

### Rotary handles

Operating device that allows the circuit-breaker to be operated by means of a rotary handle direct (RHD) and panel mounted (RHE) rotary handle are available.



Direct rotary handle



Panel mounted rotary handle

### Connection terminals

Tmax XT range of connection terminals is now more complete and consistent through the whole range. Rear terminals, extended front terminals, extended spread terminals and copper cable terminals are available for all the frame sizes. Separating partitions and insulating terminal covers can be selected for Tmax XT circuit-breakers.



### Mechanical interlock



Designed for installation on the rear of two circuit-breakers, mechanical interlock prevents two circuit-breakers from being closed simultaneously.

Tmax XT circuit-breakers and switch-disconnectors can be interlocked two-by-two (IO-OI-OO) by means of a frame and special plates, no matter if the breaker is in 3pole or 4pole version.

Rear interlock is available also on 160A frame circuit-breakers, so that use of ATS022 (Automatic Transfer Switch Unit) is no more limited to big frame size circuit-breakers.

### Keylocks and padlocks

Padlocks or key locks that prevent the circuit-breaker from being closed and/or opened can be fitted:

- Directly on the front of the circuit-breaker.
- On the rotary handle operating mechanism.
- On the front for lever operating mechanism.
- On the motor.



### ATS022

The ATS022 (Automatic Transfer Switch) is the network-generator transfer unit used in installations.





**Terminal connections****Copper cable terminals**

|              |                    |
|--------------|--------------------|
| 1SDA066905R1 | KIT FC Cu XT1 3pcs |
| 1SDA066909R1 | KIT FC Cu XT2 3pcs |
| 1SDA066913R1 | KIT FC Cu XT3 3pcs |
| 1SDA066917R1 | KIT FC Cu XT4 3pcs |

**Extended Front terminals**

|              |                 |
|--------------|-----------------|
| 1SDA066865R1 | KIT EF XT1 3pcs |
| 1SDA066869R1 | KIT EF XT2 3pcs |
| 1SDA066873R1 | KIT EF XT3 3pcs |
| 1SDA066877R1 | KIT EF XT4 3pcs |

**Extended Spread terminals**

|              |                 |
|--------------|-----------------|
| 1SDA066889R1 | KIT ES XT1 3pcs |
| 1SDA066893R1 | KIT ES XT2 3pcs |
| 1SDA066897R1 | KIT ES XT3 3pcs |
| 1SDA066901R1 | KIT ES XT4 3pcs |

**Rear terminals**

|              |                |
|--------------|----------------|
| 1SDA066937R1 | KIT R XT1 3pcs |
| 1SDA066941R1 | KIT R XT2 3pcs |
| 1SDA066945R1 | KIT R XT3 3pcs |
| 1SDA066949R1 | KIT R XT4 3pcs |

**High terminal covers**

|              |                                      |
|--------------|--------------------------------------|
| 1SDA066664R1 | HTC XT1 3p TERMINAL COVERS HIGH 2pcs |
| 1SDA066666R1 | HTC XT2 3p TERMINAL COVERS HIGH 2pcs |
| 1SDA066668R1 | HTC XT3 3p TERMINAL COVERS HIGH 2pcs |
| 1SDA066670R1 | HTC XT4 3p TERMINAL COVERS HIGH 2pcs |

**Low terminal covers**

|              |                                     |
|--------------|-------------------------------------|
| 1SDA066655R1 | LTC XT1 3p TERMINAL COVERS LOW 2pcs |
| 1SDA066657R1 | LTC XT2 3p TERMINAL COVERS LOW 2pcs |
| 1SDA066660R1 | LTC XT3 3p TERMINAL COVERS LOW 2pcs |
| 1SDA066662R1 | LTC XT4 3p TERMINAL COVERS LOW 2pcs |

**Low phase barriers**

|              |                          |
|--------------|--------------------------|
| 1SDA066676R1 | PB 100mm 4pcs XT1-XT3 3p |
| 1SDA066675R1 | PB 100mm 4pcs XT2-XT4 3p |

**High phase barriers**

|              |                          |
|--------------|--------------------------|
| 1SDA066678R1 | PB 200mm 4pcs XT1-XT3 3p |
| 1SDA066677R1 | PB 200mm 4pcs XT2-XT4 3p |

**Mechanical accessories****Rotary handles**

|              |                                   |
|--------------|-----------------------------------|
| 1SDA066475R1 | RHD XT1-XT3 F/P STANDARD DIRECT   |
| 1SDA069053R1 | RHD XT2-XT4 F/P STANDARD DIRECT   |
| 1SDA066479R1 | RHE XT1-XT3 F/P STANDARD RETURNED |
| 1SDA069055R1 | RHE XT2-XT4 F/P STANDARD RETURNED |

**Key locks on circuit breaker**

|              |  |
|--------------|--|
| 1SDA066593R1 | KLC XT1 KEY LOCK RONIS SEV.OP. X C.BREA. |
| 1SDA066594R1 | KLC XT1 KEY LOCK RONIS EQ.FEL.A OP.xC.BR |
| 1SDA066599R1 | KLC XT2-XT4 KEY LOCK RONIS SE.OP.xC.BRE. |
| 1SDA066600R1 | KLC XT2-XT4 KEY LOCK RONIS EQ.FE.A OP.xB |
| 1SDA066605R1 | KLC XT3 KEY LOCK RONIS SEV.OP. X C.BREA. |
| 1SDA066606R1 | KLC XT3 KEY LOCK RONIS EQ.FEL.A OP.xC.BR |

**Key locks on rotary handle**

|              |   |
|--------------|---|
| 1SDA066617R1 | RHL XT1..XT4 KEY LOCK RONIS DIFF. KEY RH    |
| 1SDA066622R1 | RHL XT1..XT4 KEY LOCK RONIS DIFF. KEY OP/CL |

**Padlock devices**

|              |                                   |
|--------------|-----------------------------------|
| 1SDA066588R1 | PLL XT1-XT3 PADLOCKS DEVICE REMOV |
| 1SDA066591R1 | PLL XT1-XT3 PADLOCKS DEVICE OP/CL |
| 1SDA066592R1 | PLL XT2-XT4 PADLOCKS DEVICE OP/CL |

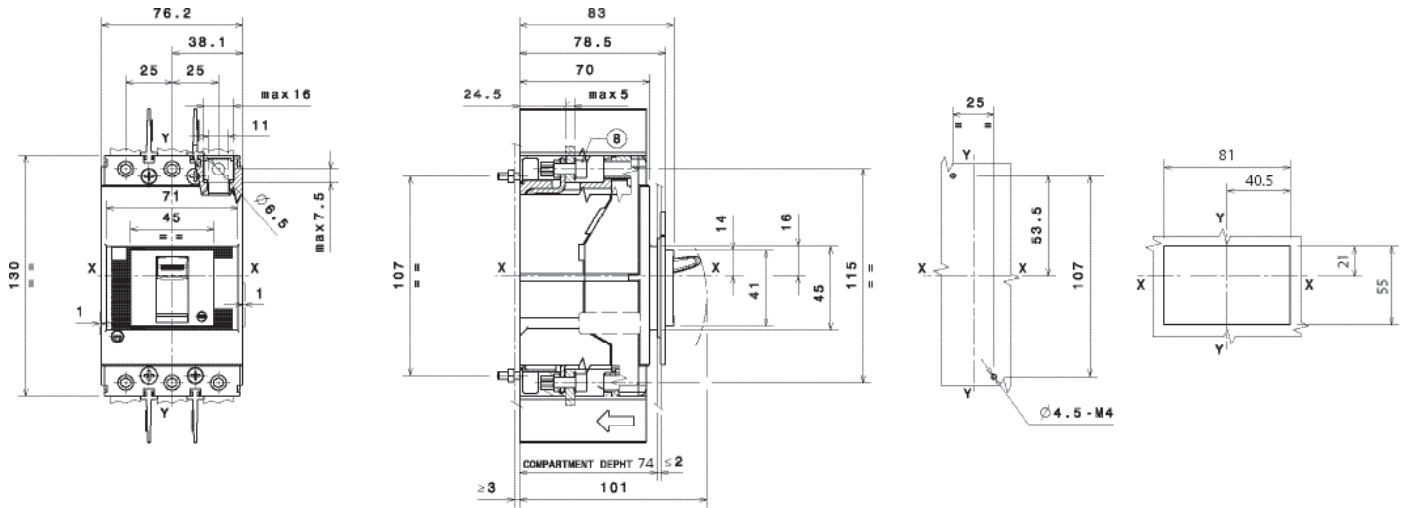
**Automatic Transfer Switch**

|              |                                      |
|--------------|--------------------------------------|
| 1SDA065524R1 | ATS022 AUTO TRANSFER SWITCH RELAY    |
| 1SDAA99203A1 | Loom kit                             |
| 1SDAA99303A1 | BTSXT1N160T33H(160) In=160, Icu=36kA |
| 1SDAA99333A1 | BTSXT1N160T34H(125) In=160, Icu=36kA |
| 1SDAA99309A1 | BTSXT1H160T33H(160) In=160, Icu=70kA |
| 1SDAA99339A1 | BTSXT1H160T34H(160) In=160, Icu=70kA |
| 1SDAA99503A1 | BTSXT3N250T33H(250) In=250, Icu=36kA |
| 1SDAA99532A1 | BTSXT3N250T34H(200) In=200, Icu=36kA |
| 1SDAA99309A1 | BTSXT1H160T33H(160) In=160, Icu=70kA |
| 1SDAA99339A1 | BTSXT1H160T34H(160) In=160, Icu=70kA |
| 1SDAA99603A1 | BTSXT4H250T33H(250) In=250, Icu=70kA |
| 1SDAA99633A1 | BTSXT4H250T34H(250) In=250, Icu=70kA |

# Tmax XT

## Dimensional drawings

### XT1



### XT3

